



Area: 1601m<sup>2</sup>

## 7 Bankart Street Raglan

### Raglan Sunset Motel

The Raglan Sunset Motel is the largest and most central motel in the township featuring 24 units offering a range of accommodation, studio units, family studios, an executive unit and a 2 bedroom self contained apartment for up to 8 people. All units have kitchenettes, flat screen TVs, bathrooms, Sky TV and wifi internet. The modern buildings and grounds have been very well maintained to the highest standard and the solid occupancy rates show an excellent return with Raglan's growing tourism popularity. The central courtyard within the 2579m<sup>2</sup> commercially zoned site is an attractive feature as is the modern well equipped conference room which can easily accommodate up to 90 clients from corporate functions and meetings to large weddings and parties. This is complemented by a fully licensed bar and kitchen

**FOR SALE**

Sold

**VIEW**

[ljhooker.co.nz/1W2HFG](http://ljhooker.co.nz/1W2HFG)

**CONTACT**

**Kyle Leuthart** 021 903 309

**LJ HOOKER RAGLAN**

(07) 825 7170

for catering and there's also a spa pool. An excellent opportunity exists here for a sole owner/ operator, shared ownership/ management structure or a paid manager. Selling as a Freehold going concern. Call Kyle for all details and to make an appointment to view.

Rating Valuations: \$4,200,000

Land Value: \$1,350,000

Improvements Value: \$2,850,000

Valuation Date: 01 Jul 2017

Waikato District Council Rates: \$19,069.21 (incl gst)

Waikato Regional Council Rates: \$1595.68

Legal Description: LOT 12 13 DP 12113

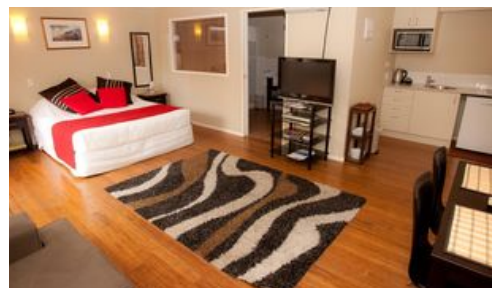
Certificate Of Title: 38971 (Freehold)

Land Area: 2579 m2

## More About this Property

<b>PROPERTY ID</b>	1W2HFG
<b>PROPERTY TYPE</b>	Commercial
<b>GROSS AREA</b>	2,579 m <sup>2</sup>
<b>SALE PRICE</b>	Sold
<b>NET LET. AREA</b>	1,601 m <sup>2</sup>

Licensed Real Estate Agents (REAA2008)



## LJ Hooker Raglan - George Boyes & Co Ltd

CONTACT: Kyle Leuthart

EMAIL: [kleuthart.raglan@ljh.co.nz](mailto:kleuthart.raglan@ljh.co.nz)

MOBILE: 021 903 309

PHONE: (07) 825 7170

FAX: (07) 825 7190

### DISCLAIMER

The above information has been furnished to us by the Vendor. We have not verified whether or not that information is accurate and do not have any belief one way or the other in its accuracy. We do not accept any responsibility to any person for its accuracy and do no more than pass it on. All interested parties should make and rely upon their own enquiries in order to determine whether or not this information is in fact accurate.



[www.ljhcommercial.co.nz](http://www.ljhcommercial.co.nz)

Residential | Commercial | Rural | Land Sections | Coastal